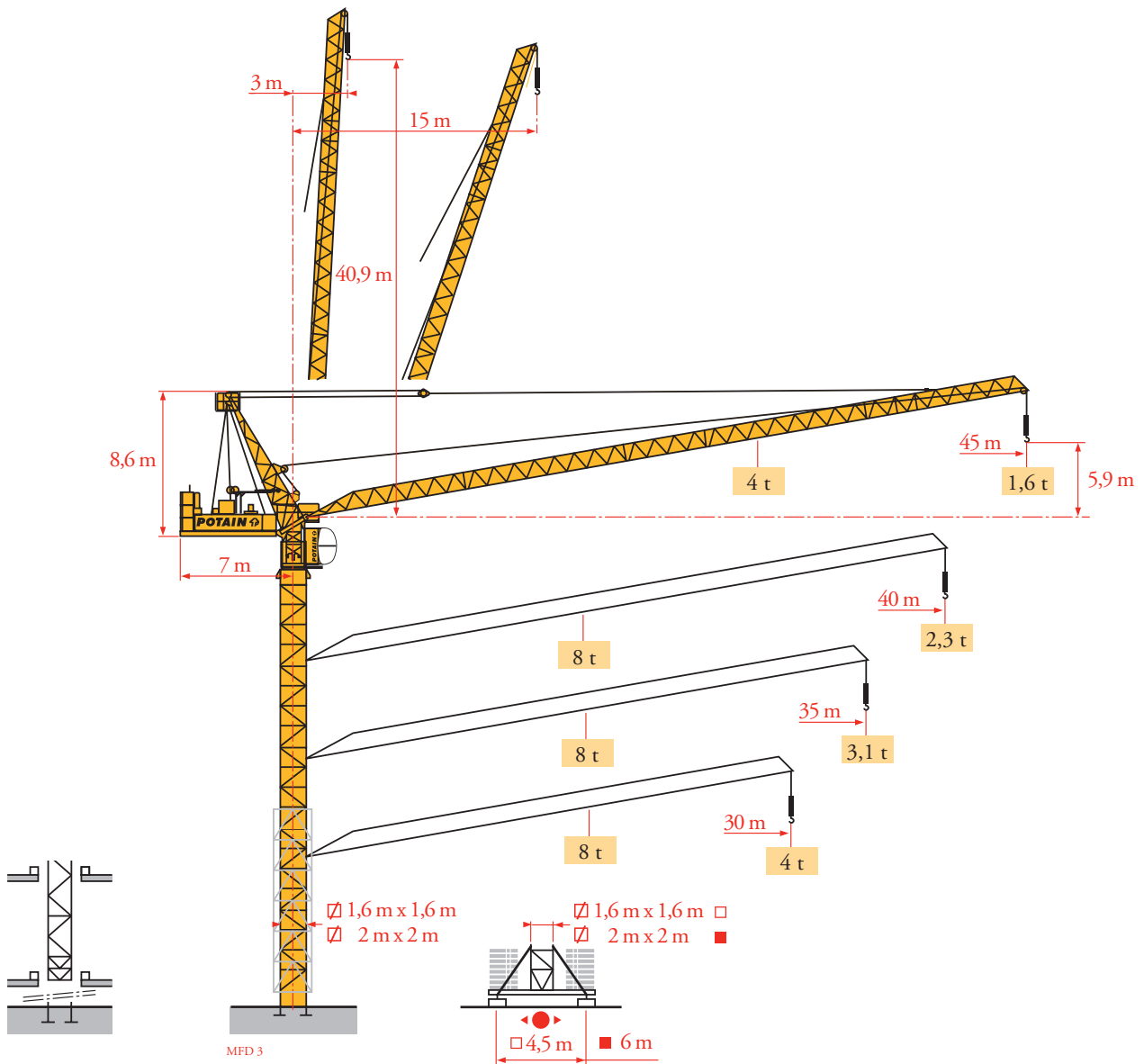


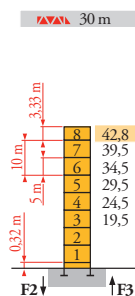
Potain MR 90C



Mat / Réactions
Maste / Eckdrücke
Masts / Reactions
Mástil / Reacciones
Torre / Reazioni
Tramo / Reações
Композиции
башни / Реакции

MFD 2

Télescopable 1,6 m
Teleskopierbar 1,6 m
Telescopico 1,6 m
Telescopico 1,6 m
Telescopagem 1,6 m
Телескопируемый,
башня 1,6м x 1,6м



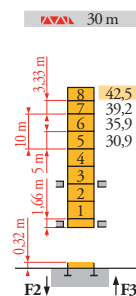
▲▲▲▲	H (m)	5 m	3,33 m
35 m	39,5	7	-
40 m	36,2	5	2
45 m	34,5	6	-

P 41 A

F2 ● 112 t
■ 173 t

F3 ● 87 t
■ 147 t

▲ 39 t

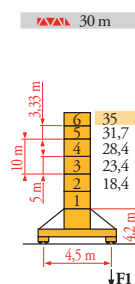


▲▲▲▲	H (m)	5 m	3,33 m
35 m	39,2	6	1
40 m	0	-	-
45 m	0	-	-

B 43 A

● 1

H

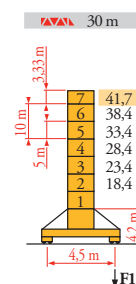


▲▲▲▲	H (m)	5 m	3,33 m
35 m	31,7	4	1
40 m	28,4	4	-
45 m	25	2	2

S 40 A

F1 ● 66 t
■ 80 t

▲ 42 t



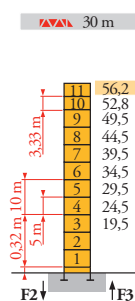
▲▲▲▲	H (m)	5 m	3,33 m
35 m	38,4	6	-
40 m	35	4	2
45 m	33,4	5	-

S 41 A

F1 ● 81 t
■ 106 t

▲ 45 t

Télescopable 2 m
Teleskopierbar 2 m
Telescopico 2 m
Telescopico 2 m
Telescopagem 2 m
Телескопируемый,
башня 1,6м x 1,6м



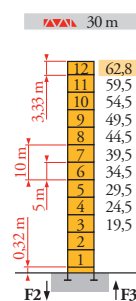
▲▲▲▲	H (m)	5 m	3,33 m
35 m	54,5	10	-
40 m	52,8	9	1
45 m	51,2	8	2

P 61 A

F2 ● 120 t
■ 245 t

F3 ● 87 t
■ 212 t

▲ 54 t



▲▲▲▲	H (m)	5 m	3,33 m
35 m	59,5	11	-
40 m	57,8	10	1
45 m	56,2	9	2

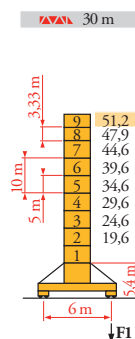
P 62 A

F2 ● 132 t
■ 292 t

F3 ● 97 t
■ 257 t

▲ 58 t

H

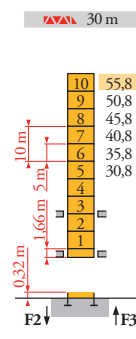


▲▲▲▲	H (m)	5 m	3,33 m
35 m	47,9	7	1
40 m	44,6	7	-
45 m	42,9	6	1

V 60 A

F1 ● 84 t
■ 125 t

▲ 61 t



▲▲▲▲	H (m)	5 m	3,33 m
35 m	54,2	9	1
40 m	53,9	8	2
45 m	50,8	9	-

B 60 A

● 1

FR

- Réactions en service
- Réactions hors service
- ▲ A vide sans lest (ni train de transport) avec flèche et hauteur maximum.

DE

- Reaktionskräfte in Betrieb
- Reaktionskräfte außer Betrieb
- ▲ Ohne Last, Ballast (und Transportachse), mit Maximalausleger und Maximalhöhe.

EN

- Reactions in service
- Reactions out of service
- ▲ Without load, ballast (or transport axes), with maximum jib and maximum height.

ES

- Reacciones en servicio
- Reacciones fuera de servicio
- ▲ Sin carga, sin lastre, (ni tren de transporte), flecha y altura máxima.

IT

- Reazioni in servizio
- Reazioni fuori servizio
- ▲ A vuoto, senza zavorra (ne assali di trasporto) con braccio massimo e altezza massima.

PT

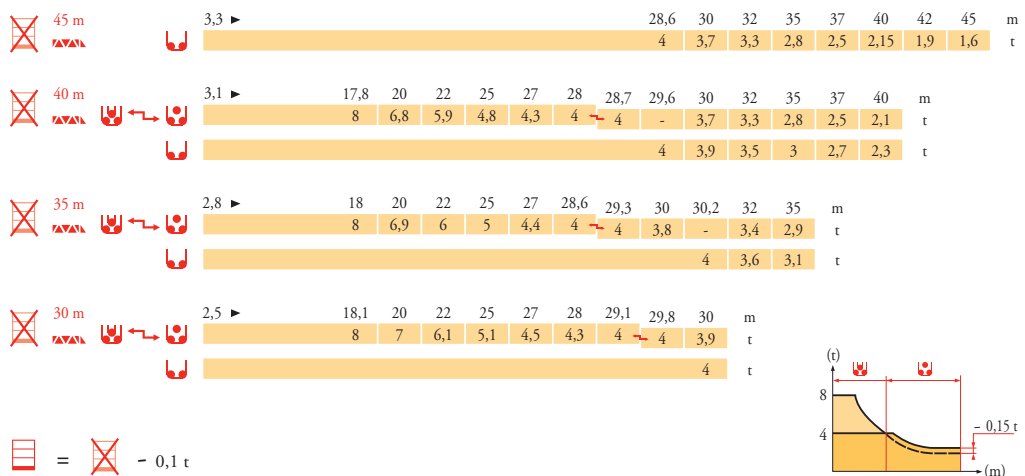
- Reações em serviço
- Reações fora de serviço
- ▲ Sem carga (nem trem de transporte)- sem lastro com lança e altura máximas.

RU

- Реакции при работе
- Реакции в покое
- ▲ Вес без груза, балласта (или транспортных осей), с максимальной длиной стрелы и максимальной высотой.

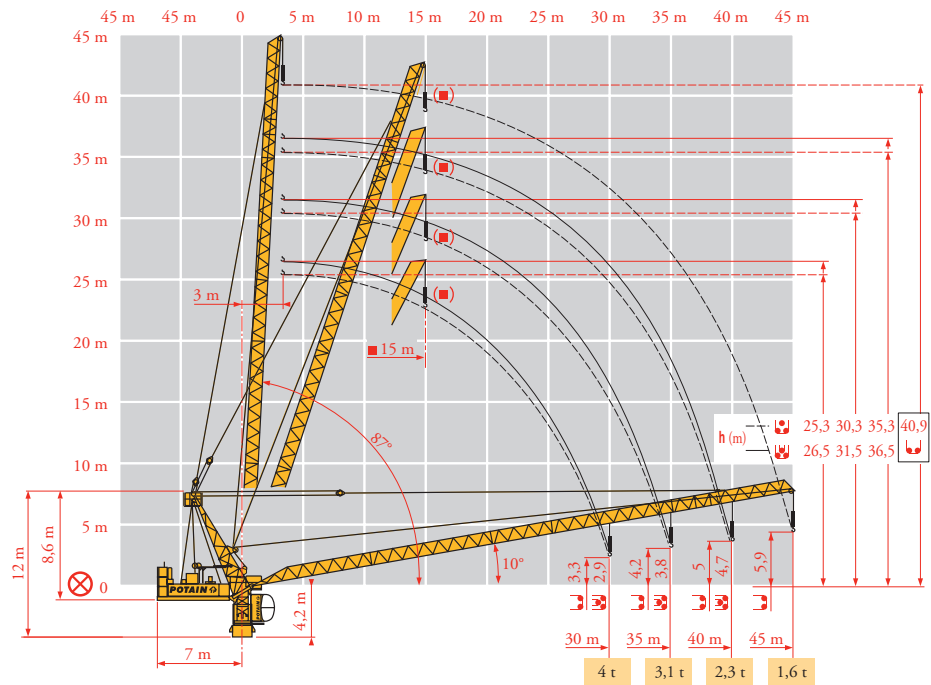
Courbes de charges
Lastkurven
Load diagrams
Curvas de cargas
Curve di carico
Curva de cargas
Диаграммы
грузоподъемностей

MFD 2



Flèche relevée
Ausleger in Steilstellung
Luffing jib
Flecha izada
Braccio impennato
Lança inclinada
Маховая стрела

MFD 2



	FR Courbes de charges sans plateforme d'intervention	DE Lastkurven ohne Arbeitsbühne	EN Load diagrams without jib-end inspection platform	ES Curvas de cargas sin plataforma de servicio	IT Curve di carico senza piattaforma di servizio	PT Curva de cargas sem uma plataforma de intervenção	RU Диаграммы грузоподъемностей без площадки для осмотра стрелы
	Courbes de charges avec plateforme d'intervention déduire 0,1 t	Lastkurven mit Arbeitsbühne 0,1 t abziehen	Load diagrams with jib-end inspection platform deduct 0,1 t	Curvas de cargas con plataforma de servicio descontar 0,1 t	Curve di carico con piattaforma di servizio dedurre 0,1 t	Curva de cargas com uma plataforma de intervenção deduzir 0,1 t	Диаграммы грузоподъемностей с площадкой для осмотра стрелы за вычетом 0,1 т
	Axe articulation flèche	Ausleger-gelenkachse	Jib hinge shaft	Eje articulación de flecha	Asse cerniera braccio	Eixo de articulação da lança	Ось шарнира стрелы
	Position girouette	Windfreistellung	Weathervaning position	Posición eleta	Libera rotazione	Posição em catavento	Флюгирование

Mécanismes
Antriebe
Mechanisms
Mecanismos
Meccanismi
Mecanismos
Механизмы












MFD 2

MR 90 C - 50 Hz															ch - PS hp	kW			
↑	33 LVF 20 Optima	m/min	2,2 → 8,6 → 26 → 34 → 50 → 64							1,1 → 4,3 → 13 → 17 → 25 → 32							30	22	469 m
		t	4 4 4 3 2 1							8 8 8 6 4 2									
↓	50 LVF 20 Optima	m/min	3,6 → 14,4 → 44 → 58 → 82 → 108							1,8 → 7,2 → 22 → 29 → 41 → 54							50	37	697 m
		t	4 4 4 3 2 1							8 8 8 6 4 2									
↔	50 VVF 20	m/min	1 min 25 s												50	37			
↻	RVF 152 Optima +	tr/min U/min - rpm	0 → 0,8												2 x 5,5	2 x 4			
S 41 A III V 60 A	RT 443 A1 - 2V	m/min	15 - 30												4 x 5	4 x 3,7			
	RT 544 A1 - 2V	m/min	13,5 - 27												4 x 7	4 x 5,2			

CEI 38	IEC 38	kVA
400 V (+6% -10%)		33 LVF : 95 kVA 50 LVF : 112 kVA

MR 90 C - 60 Hz															ch - PS hp	kW			
↑	33 LVF 20 Optima	m/min	2,2 → 8,6 → 26 → 34 → 50 → 64							1,1 → 4,3 → 13 → 17 → 25 → 32							30	22	469 m
		t	4 4 4 3 2 1							8 8 8 6 4 2									
↓	50 LVF 20 Optima	m/min	3,6 → 14,4 → 44 → 58 → 82 → 108							1,8 → 7,2 → 22 → 29 → 41 → 54							50	37	697 m
		t	4 4 4 3 2 1							8 8 8 6 4 2									
↔	50 VVF 20	m/min	1 min 25 s												50	37			
↻	RVF 152 Optima +	tr/min U/min - rpm	0 → 0,8												2 x 5,5	2 x 4			
S 41 A III V 60 A	RT 443 A1 - 2V	m/min	18 - 36												4 x 6	4 x 4,4			
	RT 544 A1 - 2V	m/min	16 - 32												4 x 8,4	4 x 6,2			

CEI 38	IEC 38	kVA
480 V (+6% -10%)		33 LVF : 95 kVA 50 LVF : 112 kVA

						
Levage	Heben	Hoisting	Elevación	Sollevamento	Elevação	Подъем
	Ausleger-Einziehen	Luffing	Elevación de flecha	Brandeggio	Inclinação da lança	Подъем стрелы
	Schwenken	Slewing	Orientación	Rotazione	Rotação	Поворот
	Kranfahren	Travelling	Traslación	Traslazione	Translação	Перемещение крана
	Auf Anfrage	Consult us	Consultarnos	Consultateci	Consultar-nos	Проконсультируйтесь у нас



Document commercial non contractuel. Pour toute information technique se référer à la notice correspondante.

Unverbindliches Vertriebsdokument. Für technische Informationen, siehe die entsprechenden Anweisungen.

This commercial document is not legally binding. For any technical information, please refer to the corresponding instructions.

Documento commercial no contractual. Para cualquier información técnica, ver la noticia correspondiente.

Documento commerciale non vincolante, per tutte le informazioni tecniche fare riferimento al catalogo istruzioni.

Documento comercial não contratual. Para qualquer informação técnica complementar consultar as respectivas instruções.

Этот коммерческий документ не является юридически обязательным. Для получения технической информации, см. соответствующие инструкции.



Manitowoc - Americas - World Headquarters
2400 S. 44th Street • Manitowoc • WI 54220 USA
Tel: +1 920 684 4410 • Fax: +1 920 652 9778

Manitowoc - Europe, Middle East & Africa
Manitowoc France SAS
18, rue de Charbonnières B.P. 173 • 69132 ECULLY Cedex • FRANCE
Tel: +33 (0)4 72 18 20 20 • Fax: +33 (0)4 72 18 20 00

Manitowoc - Asia Pacific
16F Xu Hui Yuan Building,
1089 Zhongshan No.2 Road (S) • Shanghai 200030 China
Tel: +86 21 6457 0066 • Fax: +86 21 6457 4955

MR 90C

REF. 2008.04 MFD 3